

XWEB EVO Supervisor and Monitoring Systems

November 2014

Dixell[™]



XWEB EVO



XWEB EVO

Supervisor and Monitoring Systems for the management of Retail field and HVAC/R applications

XWEB EVO

MAIN APPLICATIONS



XWEB EVO

THE SCALABLE SOLUTIONS

The XWEB EVO Series offers maximum adaptability suitable for every kind of application, from petrol station, to hypermarket

Application Categories:

- Hypermarkets
- Supermarkets
- Restaurants
- Convenience Stores
- Petrol Stations

Device Functions:

- Alarm Management and Control
- Monitoring and Control
- Industrial Monitoring and Control
- Monitoring, Control, Energy Optimization and Supervision

XWEB EVO

SUPERVISOR AND MONITORING SOLUTION FOR RETAIL

With its powerful hardware platform, Web technology architecture and a complete range of dedicated functions, XWEB EVO is the right choice for the Retail environment

AIR CONDITIONING & SPECIAL APPLICATIONS



LIGHTING, LEAK DETECTION & ENERGY MONITORING



COMPRESSOR RACKS & CO₂ SOLUTIONS



CASES & COLD ROOMS



SUPERVISOR & MONITORING SOLUTIONS



XCENTER

Centralized Retail Management for Call Centers

ProAct™ Services

- Alarm Management
- Energy Monitoring & Targeting Reports
- Setpoint Management
- Smart Dispatch
- Site Administration
- Food Quality Reports
- Enhanced Retail Services

XWEB EVO



HIGH CONNECTIVITY

A powerful hardware platform with GPRS modem, USB, Ethernet, RS485 ports, and more, offers the maximum level of connectivity.



ENVIRONMENTALLY FRIENDLY

With our eco-friendly solutions, innovation and efficiency means respecting the environment by optimizing consumption and reducing pollution, gas emission and waste.



ENERGY SAVING

Special algorithms and continuous tracking of energy usage optimizes the application's efficiency by increasing energy savings and reducing costs.



XWEB EVO

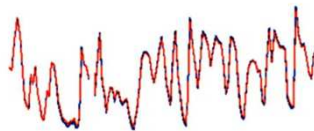
THE EVO BENEFITS



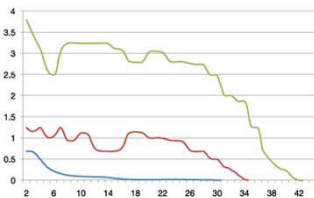
Smarter alarm with incremental notification priority



Just few command for HACCP file printout generation



High resolution graphs for last day (circular graph) useful for diagnostic



«Real time data graphs» useful for commisioning

XWEB EVO

THE EVO BENEFITS



Easier hystorical data read out with http protocol to another server



Save/load graph template configurations



High integration with mobile device IOS & ANDROID (less JAVA dependancy)



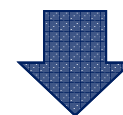
Completely revised interface with highest level of customization

XWEB300D EVO

ALARM MANAGEMENT AND CONTROLLING WEB SERVER



Designed for 6 or 18 device installations



Mini-market

Petrol Stations

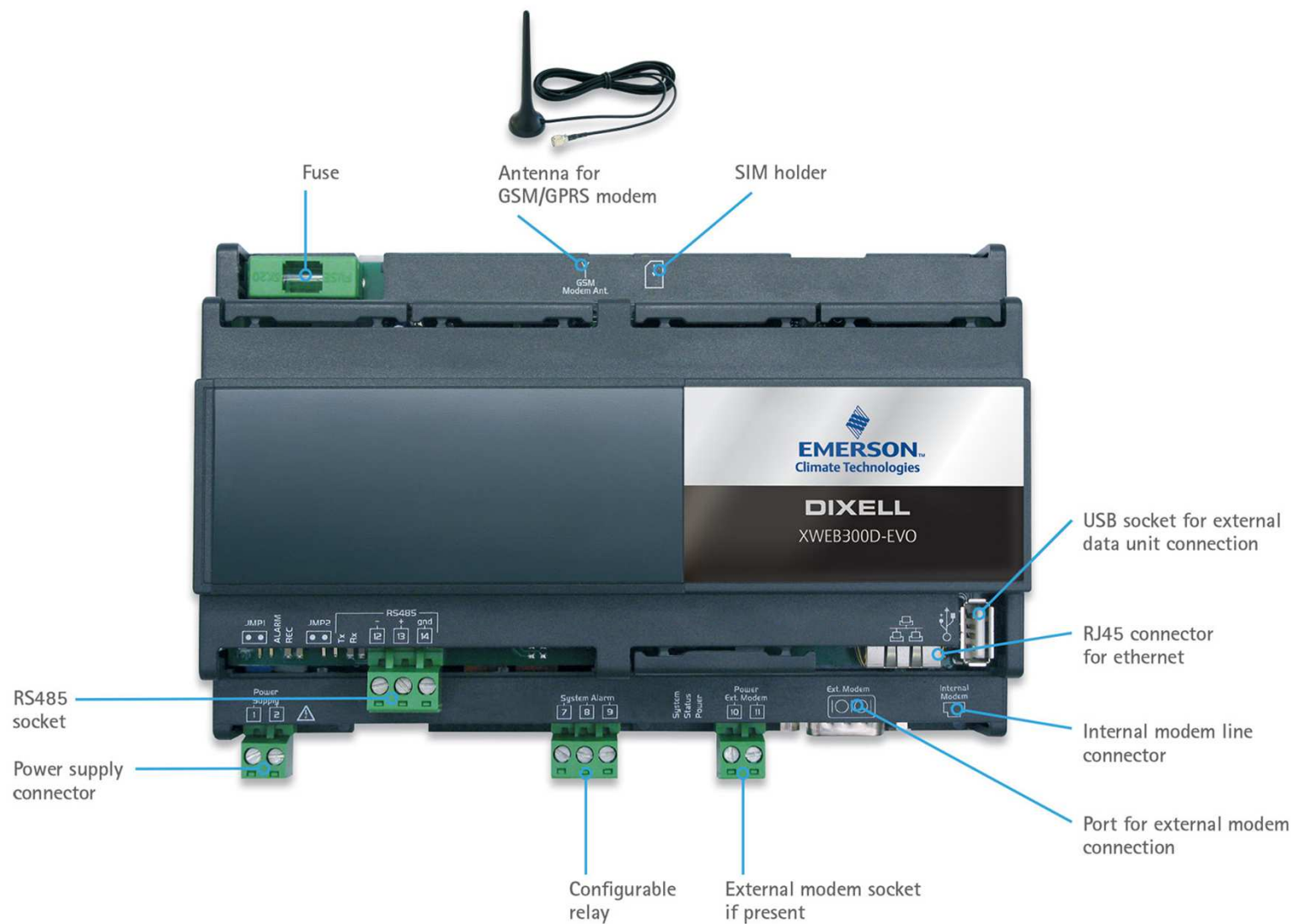
Small Storage Centres

XWEB300D EVO

- 10DIN Rail module directly inside the machine board or wall mounting with brackets
- Up to 1 year temperature recording
- Optimized controller values visualization via “Single View” and “Overview” functions
- Always accessible even with isolated installation via GPRS connectivity
- Possibility to modify the parameters of the connected devices remotely
- Automatic data export to USB pendrive
- Alarm notification via FAX, SMS or e-mail



XWEB300D EVO

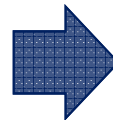


XWEB500D EVO & XWEB500 EVO

MONITORING AND CONTROLLING WEB SERVER



Designed for medium installations up to
36, 50 or 100 devices



Petrol Stations

Restaurant Chains

Supermarkets

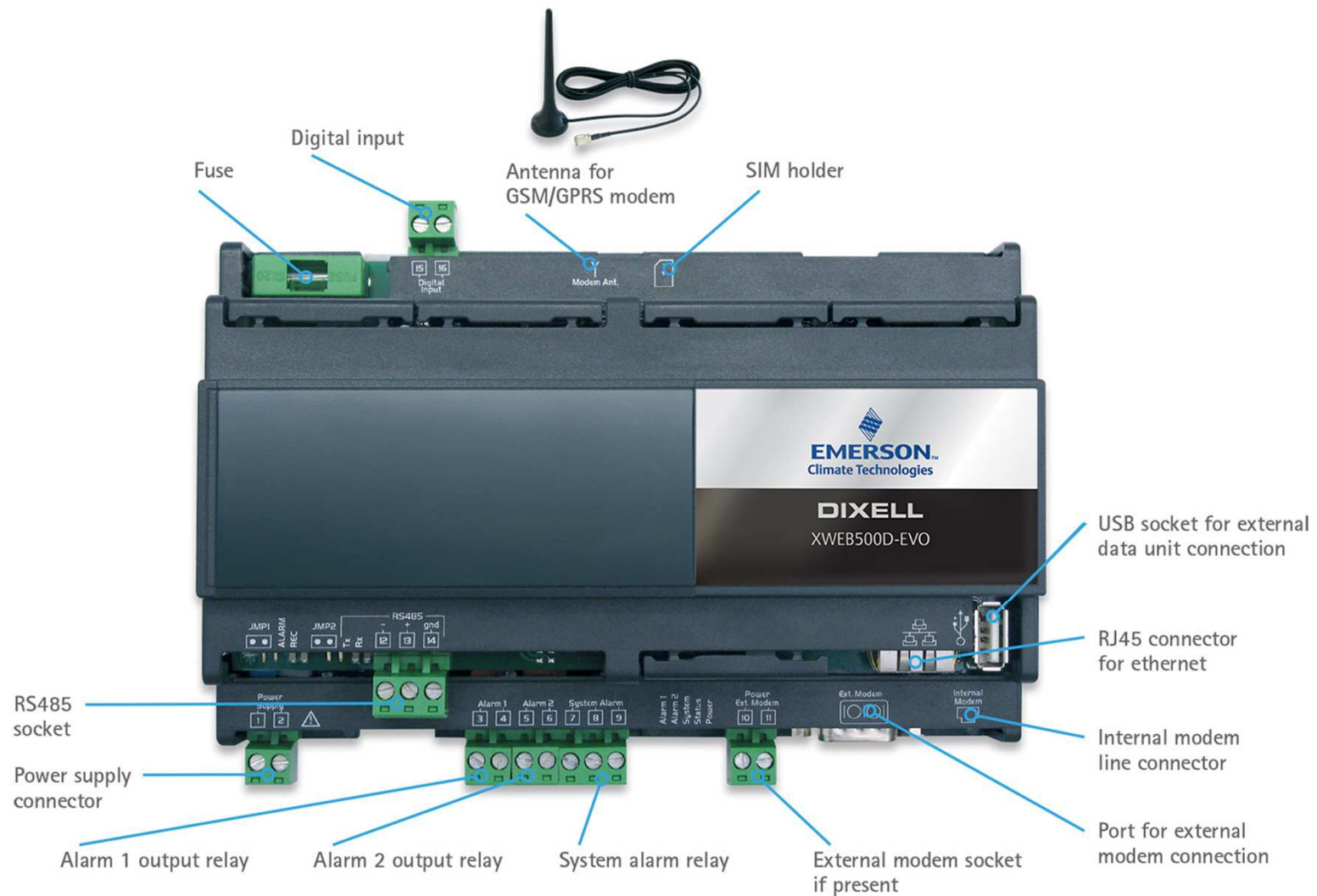
Storage Centers

XWEB500D EVO & XWEB500 EVO

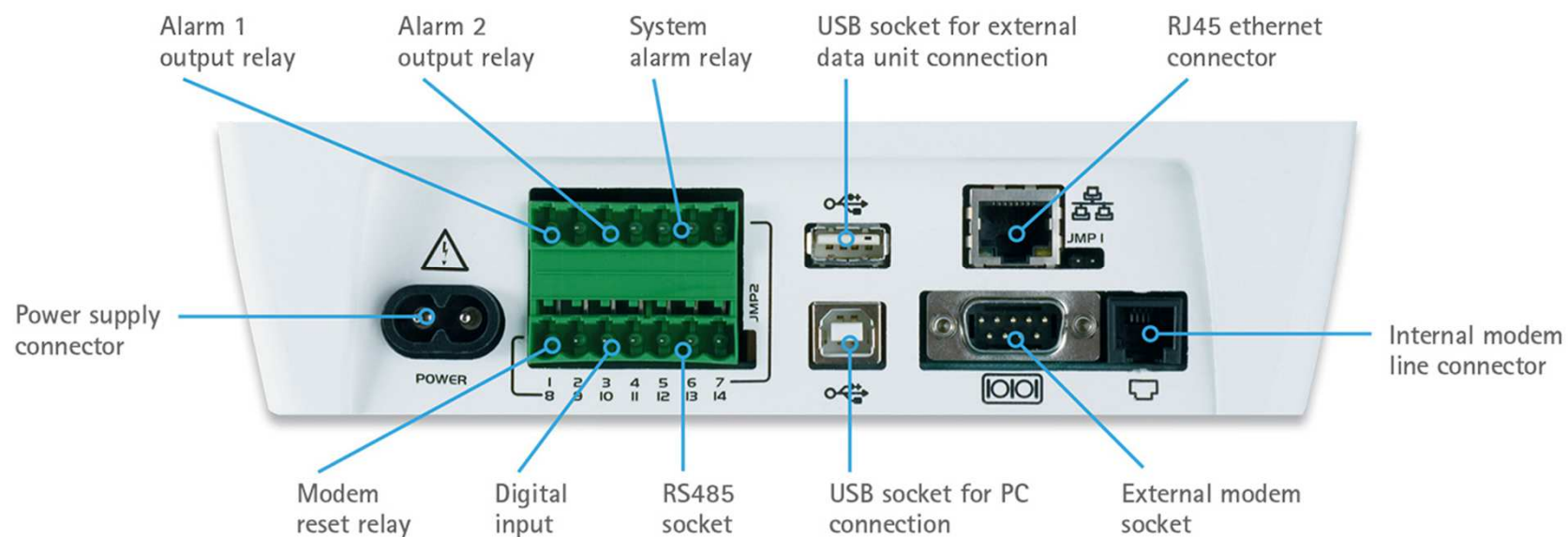
- 10DIN Rail module directly inside the machine board or wall mounting with brackets (XWEB500D EVO)
- Up to 1 year temperature recording
- Optimized controller values visualization via “Single View” and “Overview” functions
- Stand alone usage thanks to the back lit LCD local display and keyboard (XWEB500 EVO)
- Always accessible even with isolated installation via GPRS connectivity (XWEB500D EVO)
- Possibility to modify the parameters of the connected devices remotely
- Customizable web user interface (layout)
- Performance meter for cooling demand control
- Automatic data export to USB pendrive
- Easy plant management by means of the “Scheduler” to send commands according to a custom calendar
- Alarm notification via FAX, SMS or e-mail
- HACCP report print-out in pdf format
- CRO for compressor rack optimization



XWEB500D EVO & XWEB500 EVO



XWEB500D EVO & XWEB500 EVO



XWEB3000 EVO

INDUSTRIAL MONITORING AND CONTROLLING WEB SERVER



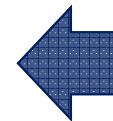
Restaurant Chains

Supermarkets

Hypermarkets

Large Storage & Distribution Centers

Production and Storage Goods Processing

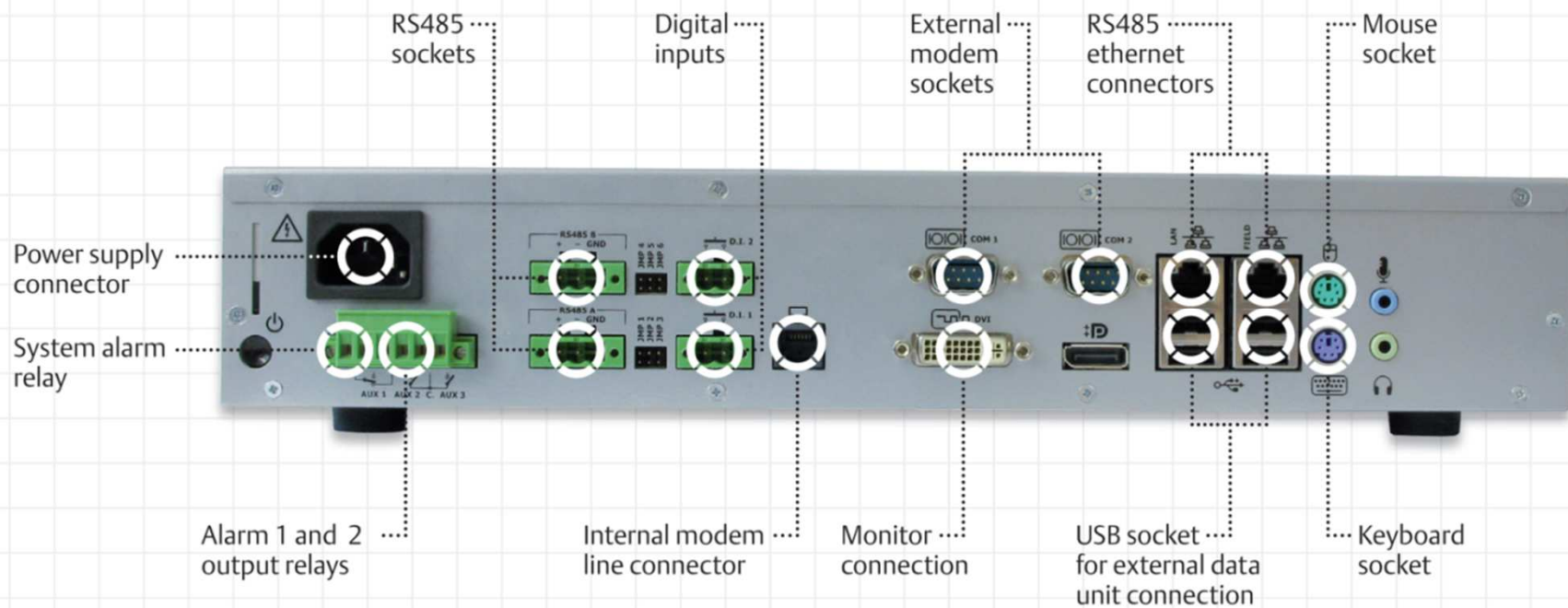


**Designed for larger installations
up to 494 devices**

XWEB3000 EVO

- 19" RACK or desk mounting
- Up to 1 year temperature recording
- Optimized controller values visualization via "Single View" and "Overview" functions
- Dual instrument network to increase safety and total lenght (up to 2Km)
- Possibility to modify the parameters of the connected devices remotely
- Customizable web user interface (layout)
- Performance meter for cooling demand control
- Easy plant management by means of the "Scheduler" to send commands according to a custom calendar
- Alarm notification via FAX, SMS or e-mail
- HACCP report print-out in pdf format

XWEB3000 EVO



XWEB5000 EVO

MONITORING, CONTROLLING AND SUPERVISOR WEB SERVER

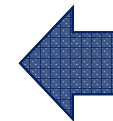


Hypermarkets

Large Storage & Distribution Centers

Production and Storage Goods Processing

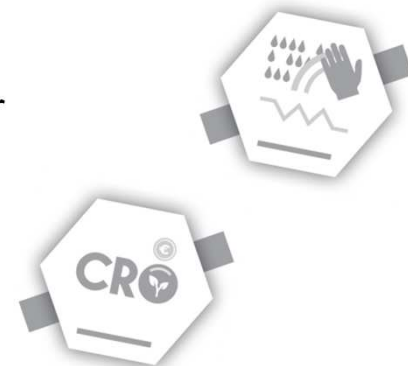
Customer Service Centers



Designed for larger installations with up to 494 devices in the refrigeration, conditioning and building automation field

XWEB5000 EVO

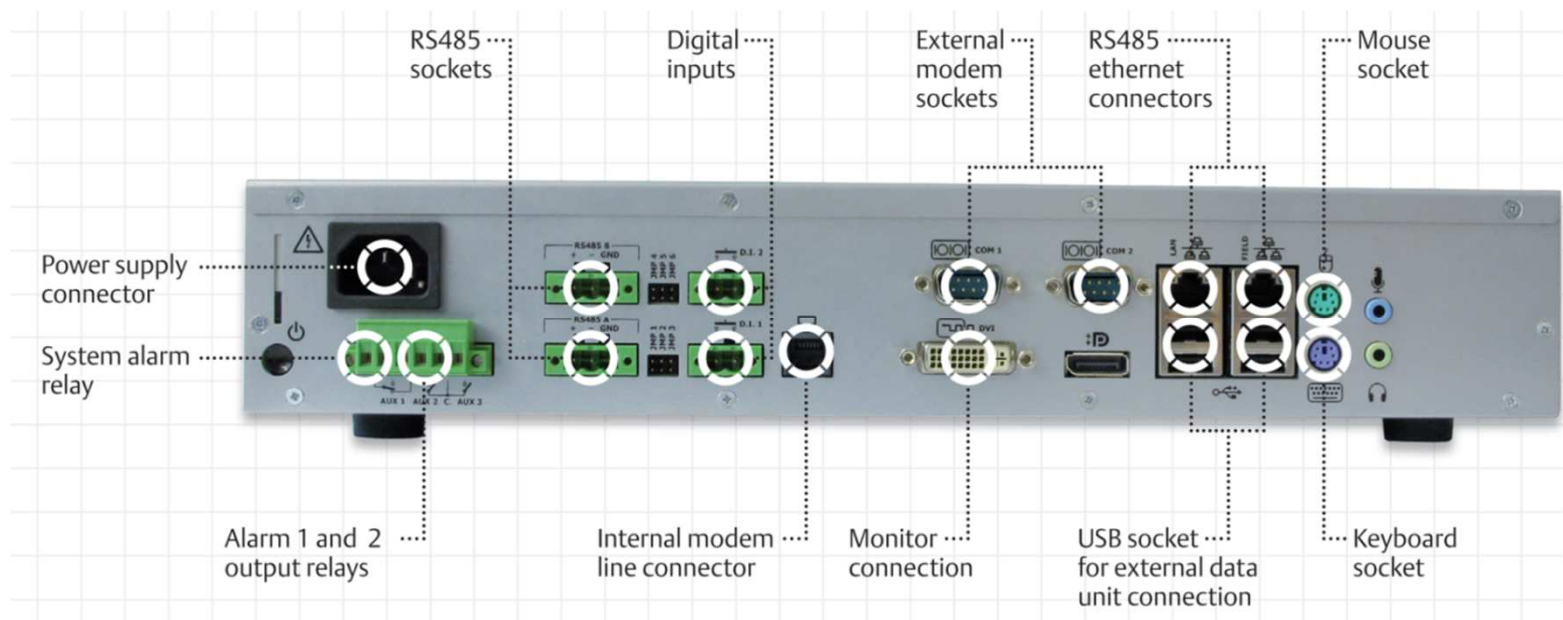
- 19" RACK or desk mounting
- Up to 1 year temperature recording
- Optimized controller values visualization via "Single View", "Run Time" and "Overview" functions
- Dual instrument network to increase safety and total lenght (up to 2Km)
- Possibility to modify the parameters of the connected devices remotely
- Customizable web user interface (layout)
- Performance meter for cooling demand control
- Easy plant management by means of the "Scheduler" to send commands according to a custom calendar
- Alarm notification via FAX, SMS or e-mail
- HACCP report print-out in pdf format
- Powerful supervising engine with embedded editor and field simulator
- CRO for compressor rack optimization
- Dew point for anti-sweat heater control



XWEB5000 EVO

SUPERVISOR

It is possible to intervene sending commands to monitored units with algorithm made by the installer



XWEB EVO

DESKTOP

The screenshot displays the XWEB EVO desktop interface. At the top, a browser window shows the URL 10.100.81.183. The main dashboard is divided into several sections: NT UNITS, RACKS, ENERGY, LT UNITS, and CELLS. Each section contains multiple green rectangular widgets representing different monitoring points. A tooltip is visible over one of the widgets, displaying 'RS2-003 New_XR70CX' and 'Probe 1 18.4 °C High Value Pb1'. At the bottom, there is an 'Active Alarms' section with a table listing alarms, and a 'Global Commands' section with buttons for 'Snooze Alarms' and 'HACCP Print'. A status bar at the very bottom shows the time (13:51), date (06/02/2014), and navigation icons.

Dashboard

Any desktop could be home page

Widget

Code	Device Name	Addr.	Name	Start
367	New_XR570C	RS2-002	Open Door	06/02/14 13:51:04
368	New_XR170C	RS2-005	Open Door	06/02/14 13:51:04
369	New_XR170C	RS2-007	Open Door	06/02/14 13:51:04
370	New_XR70CX	RS2-003	High Value Pb1	06/02/14 13:51:04

XWEB EVO

OVERVIEW DESKTOP

The HACCP report is just **two clicks away**: the user needs to just input the period of the report; the report can also be sent via email, printed directly or saved as PDF file

H.A.C.C.P. printout									
WBELLUNO_EVO_NEWHW - XWEB EVO									
date: 06.02.14 time: 12.51 Sampling: 21.00 Selected interval: 30.01.14 12.46 - 06.02.14 12.46									
Legend:*=defrost, !=post defrost, SO=System OFF, #=unit OFF, X=offline, §=door open									
TIME TABLE:	30/01 12:46	31/01 09:46	01/02 06:46	02/02 03:46	03/02 00:46	03/02 21:46	04/02 18:46	05/02 15:46	06/02 12:46
RS1-010 Murale latticini 1_SX	°C	0.6	0.0	!-0.6	0.4	2.7	*7.0	-1.8	!-1.8
RS1-011 Murale latticini 2_SX_M	°C	-2.8	-0.2	!-1.9	2.6	3.0	*6.5	1.7	!0.4
RS1-012 Murale latticini 3_DX_S	°C	*7.8	-2.6	!-1.8	1.1	0.0	!0.8	2.2	2.4
RS1-013 Murale latticini 4_DX_M	°C	*10.9	0.0	!2.0	2.1	1.3	!-1.3	1.3	0.8
RS1-014 MURALE FV Pos 3M	°C	2.5	1.0	*9.9	0.6	!-2.2	-1.5	-0.9	!-0.4
RS1-015 Insalate 8M	°C	5.0	5.1	*11.6	4.4	5.6	1.8	2.6	!1.5
RS1-016 Pasticceria	°C	2.8	2.9	!3.4	1.5	3.5	1.6	2.4	!4.5
RS1-017 Gastronomia DX	°C	6.8	3.7	!6.8	4.0	4.4	3.6	6.3	!3.7
RS1-018 Gastronomia SX	°C	2.6	-0.3	!2.2	0.3	0.8	-2.0	2.0	!-2.4
RS1-020 Take away Formaggi DX	°C	-4.3	-3.6	!-3.2	-1.0	-2.0	0.1	-1.6	!-5.0
RS1-021 Take away Formaggi SX	°C	4.1	-1.6	!0.1	-1.2	-0.7	3.4	0.6	!3.0
RS1-024 BANCO CARNI Pos5	°C	0.0	1.7	!-0.2	1.1	1.7	2.2	2.0	!2.6
RS1-025 Take away carni SX	°C	-2.2	-0.3	-0.4	0.0	0.0	!-0.9	0.5	-4.6
RS1-026 Take away carne SX	°C	-0.2	-3.8	0.1	-1.5	-0.6	!-5.6	-5.3	-5.2
RS1-027 CELLA PESCE	°C	0.2	0.2	*5.3	-0.2	!3.1	*3.5	-0.2	-0.1
RS1-028 CELLA ORTOFRUTTA	°C	9.3	9.9	*8.8	9.1	9.3	*9.4	8.0	9.8
RS1-029 CELLA POLLI	°C	2.6	2.6	!0.6	1.3	2.7	!2.2	0.3	2.8
RS1-030 CELLA CARNI	°C	1.7	-0.1	!7.0	X	X	!1.6	1.0	2.0
RS1-031 CELLA SURGELATI	°C	-19.5	-18.1	!-12.0	-20.3	-19.2	!-14.1	-19.7	-17.7
RS1-041 Surgelati SX	°C	-26.3	-23.6	-22.0	-23.5	-27.1	!-22.7	-25.6	-26.0
RS1-042 Surgelati CE	°C	-25.4	-23.2	-21.8	-23.8	-24.2	!-22.0	-25.2	-22.1
RS1-043 Surgelati DX	°C	-24.1	-23.4	-21.0	-23.3	-23.9	!-22.2	-25.2	-21.6
RS1-060 Isola latticini	°C	-0.1	2.8	*8.2	-0.5	3.1	3.1	0.1	!1.6
RS1-061 Isola latticini	°C	0.5	0.5	*9.6	1.5	0.4	1.2	1.6	!1.4
RS1-062 Isola latticini	°C	-0.2	1.8	*9.0	3.0	0.5	1.2	0.0	!1.2
RS1-063 Isola latticini	°C	1.7	3.6	*10.3	-0.4	1.1	4.1	0.2	!0.2
RS1-064 Isola latticini	°C	0.6	2.5	*9.1	0.3	0.9	1.3	3.3	!0.7
RS1-065 Isola latticini	°C	0.8	0.4	*8.0	2.2	2.8	0.8	2.2	!0.9

page:1/1

XWEB EVO

SINGLE VIEW

Single view with all the tools in one page

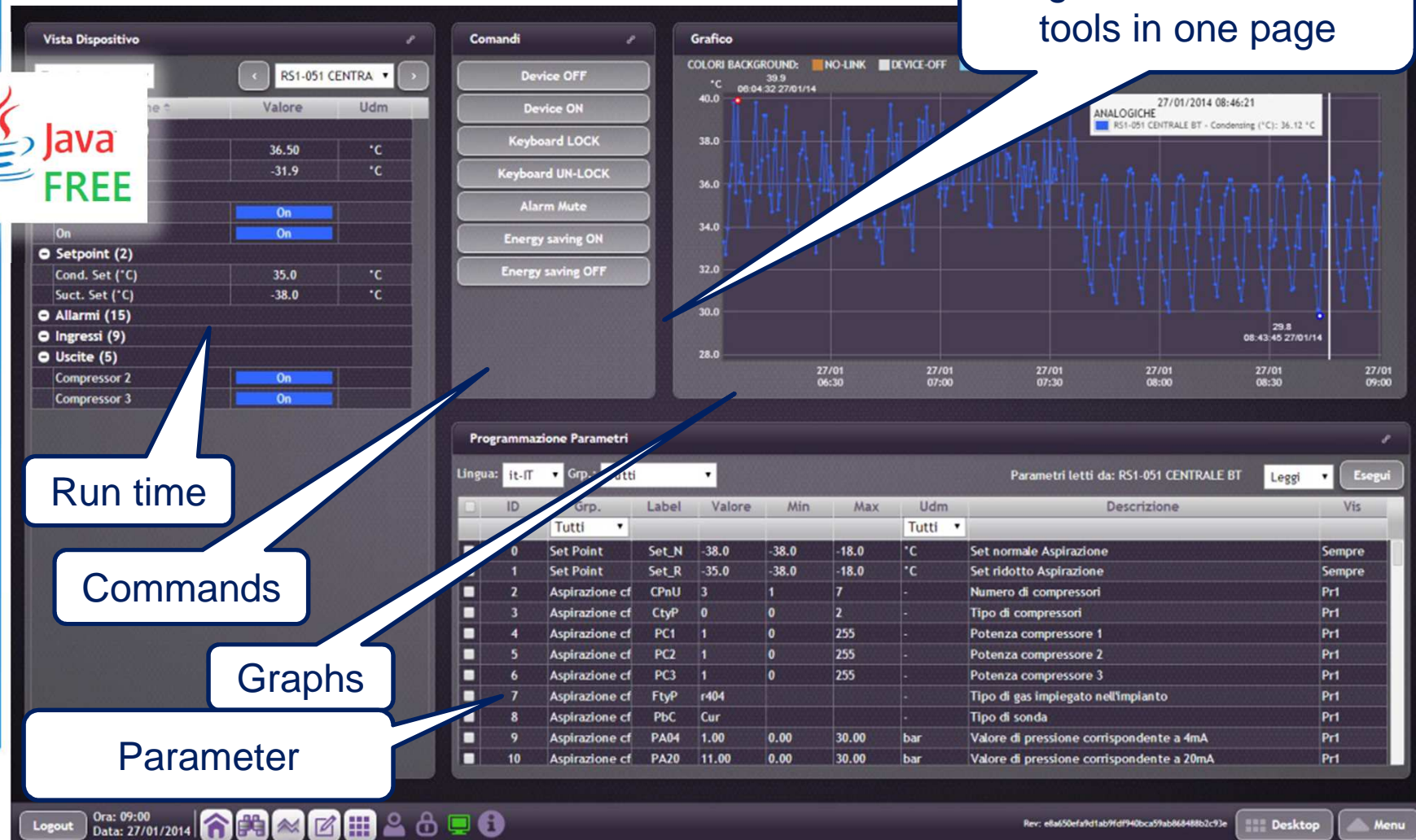


Run time

Commands

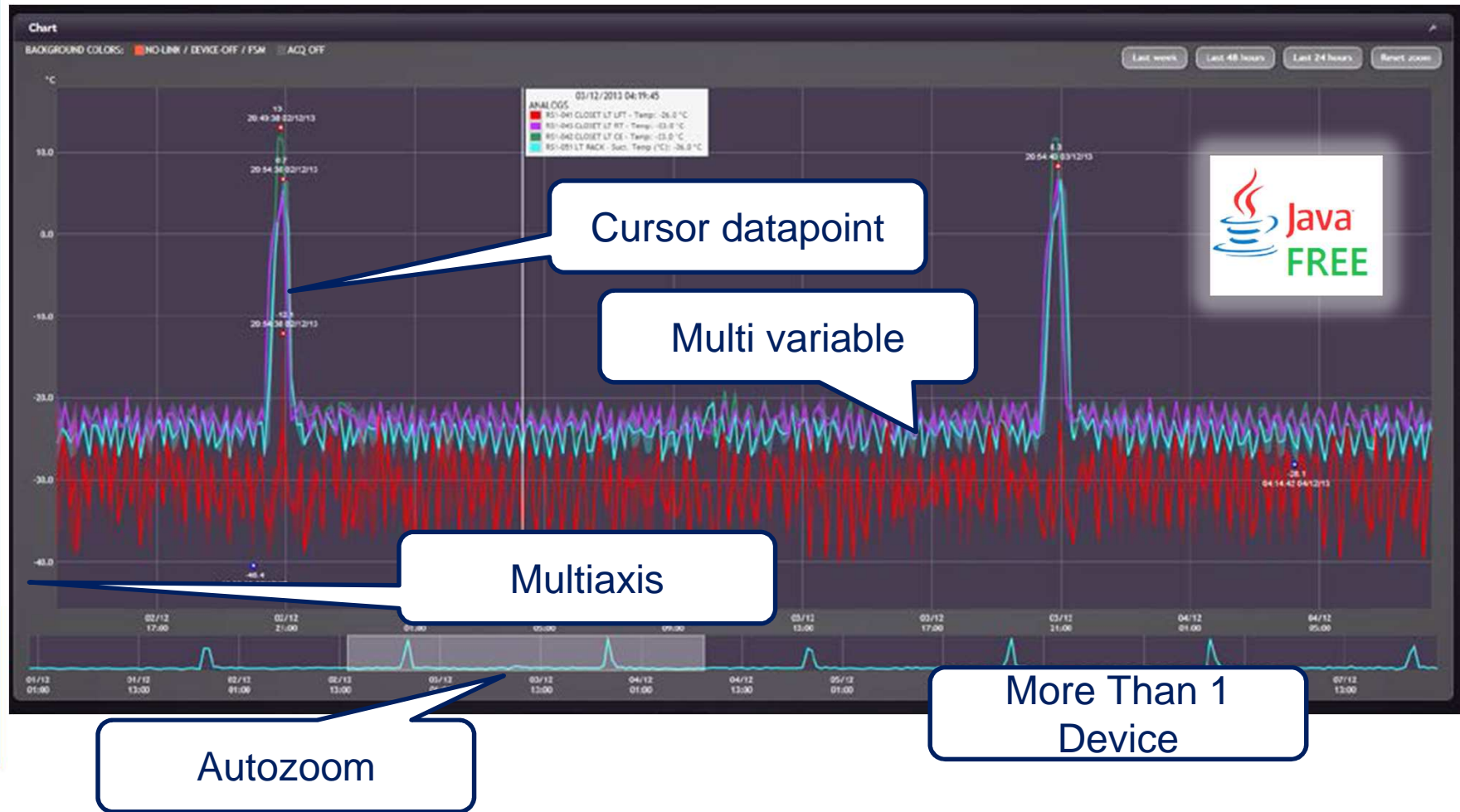
Graphs

Parameter



XWEB EVO

GRAPHS

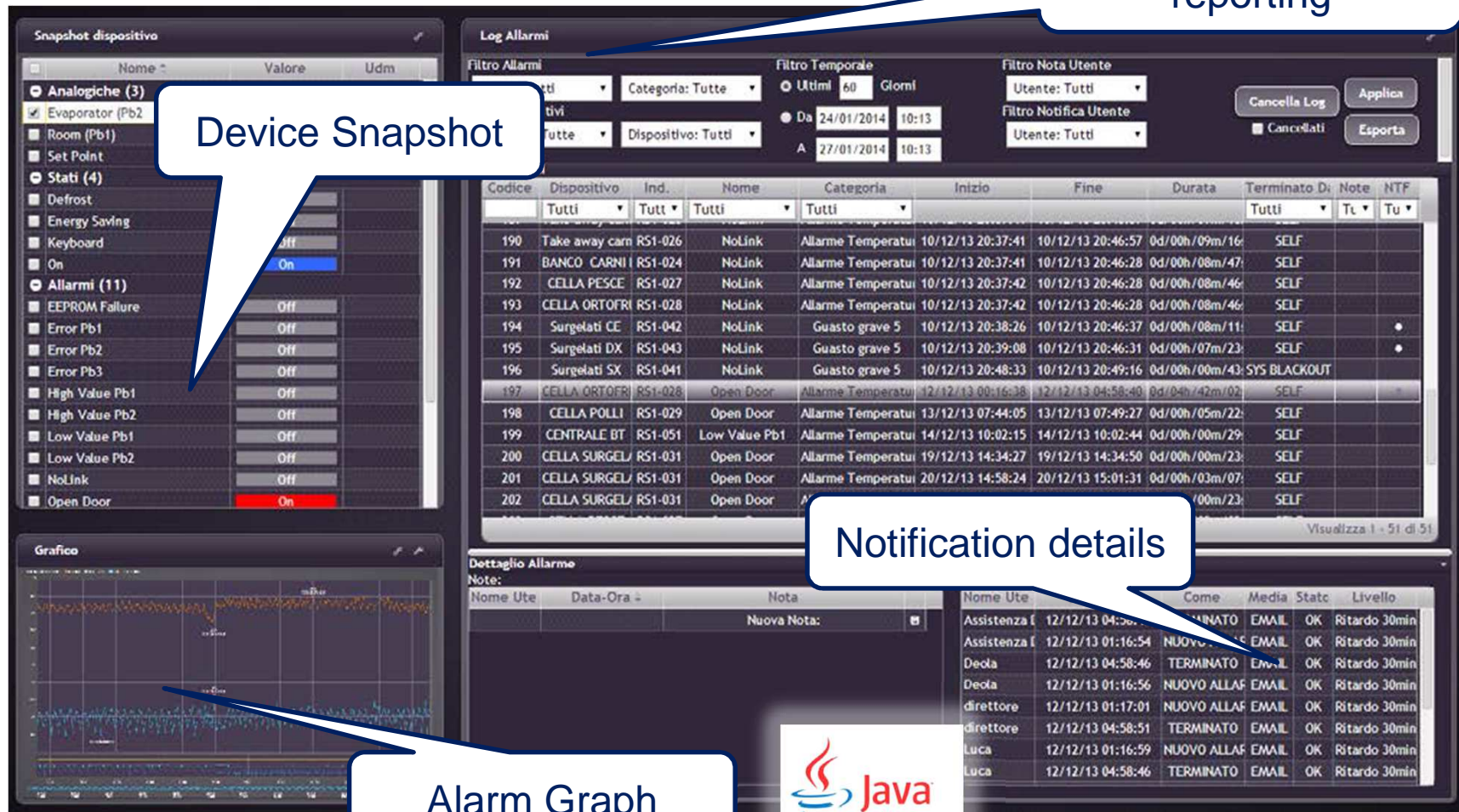


XWEB EVO

ALARMS

Alarm with complete reporting

Device Snapshot

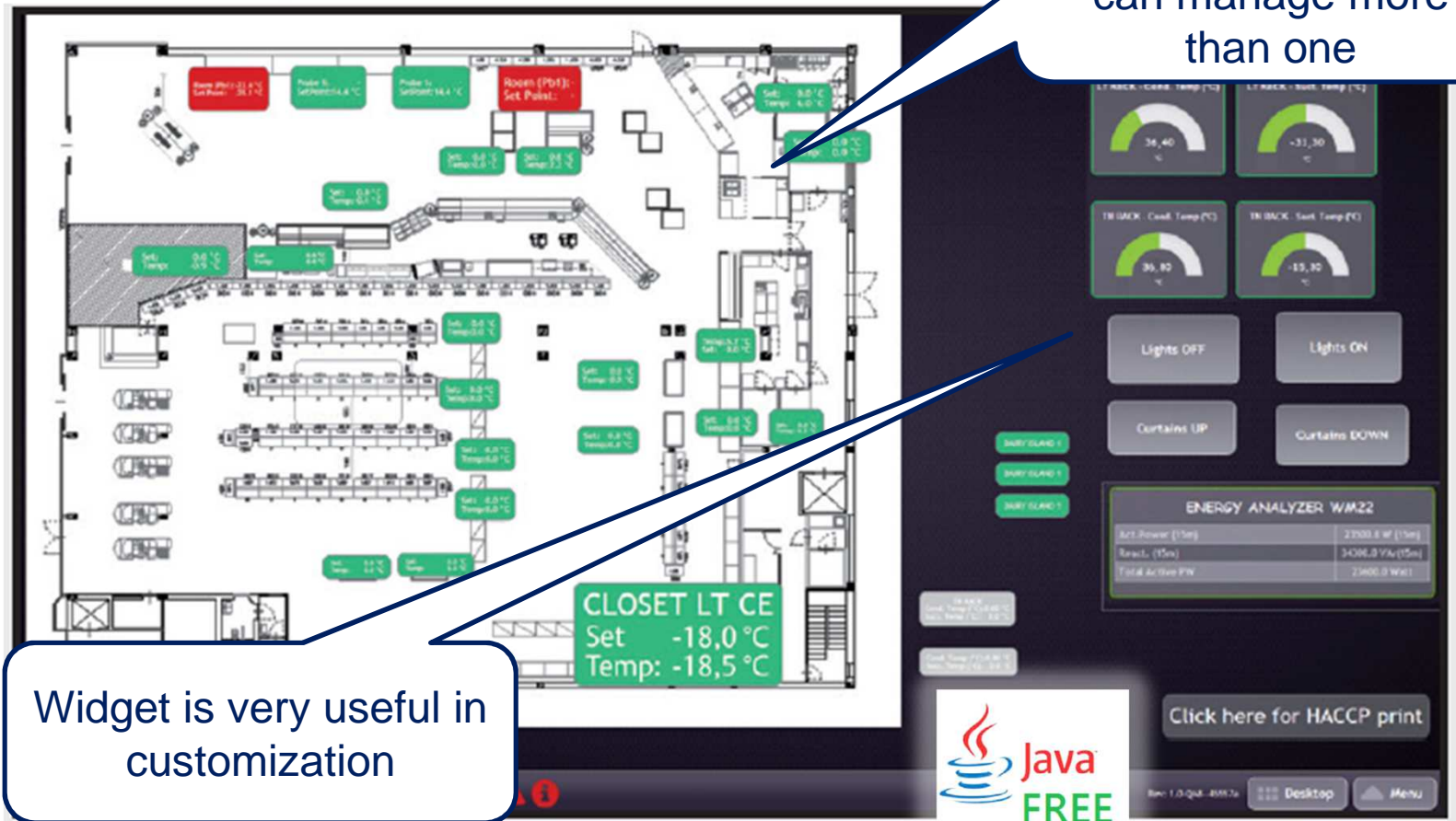


Notification details

Alarm Graph

XWEB EVO

LAYOUT



The layout is a desktop , and XWEB can manage more than one

Widget is very useful in customization

XWEB EVO

CONNECTION VIA TABLET

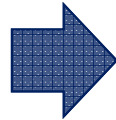
The user can access the revolutionary XWEB EVO user interface with tablets and Web browsers.



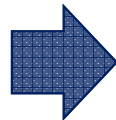
XWEB EVO

LOCAL CONNECTIONS

XWEB EVO systems can be connected directly to a PC



XWEB3000 EVO and XWEB5000 EVO can be used in stand-alone mode through a monitor, keyboard and mouse connection.



XWEB EVO

REMOTE CONNECTIONS



XWEB EVO

HARDWARE FEATURES

	XWEB300D EVO	XWEB500D EVO	XWEB500 EVO	XWEB3000 EVO	XWEB5000 EVO
Format	10 DIN Rail	10 DIN Rail	210x230x87h	350x235x47h	350x235x47h
Power supply	24Vac or 100÷230Vac	24Vac or 100÷230Vac	100÷230Vac	100÷230Vac	100÷230Vac
Display			•		
N° of instruments	6 - 18	36 - 50 - 100	36 - 50 - 100	494	494
USB output for device connection	1	1	1	6	6
Relay output	1	3	3	3	3
Digital input		1	1	2	2
LAN output	1	1	1	2	2
RS485 output	1	1	1	2	2
External modem	analogue or GSM	analogue or GSM	analogue or GSM	analogue or GSM	analogue or GSM
Internal modem	analogue or GPRS	analogue or GPRS	analogue or GPRS	analogue	analogue

XWEB EVO

FUNCTIONS

	XWEB300D EVO	XWEB500D EVO	XWEB500 EVO	XWEB3000 EVO	XWEB5000 EVO
RS485 line check	•	•	•	•	•
Parameter programming	•	•	•	•	•
Overview function	•	•	•	•	•
Data export in Excel® format	•	•	•	•	•
Graphics	•	•	•	•	•
Circular graphics	•	•	•	•	•
Real time graphics	•	•	•	•	•
Global commands	•	•	•	•	•
Global trend in alarm conditions	•	•	•	•	•
Alarms on XJR40D module	•	•	•	•	•
Backup/restore configuration and data	•	•	•	•	•
XCenter	•	•	•	•	•
Daily export module		•	•	•	•
Layout function		•	•	•	•
Scheduler function		•	•	•	•
Performance meter		•	•	•	•
HACCP report print-out in pdf format		•	•	•	•
CRO module		•	•		•
Local print function				•	•
Dew point module					•
Supervision module					•