

XWEB300/500D and XWEB500

“JAVA certificate error” solution

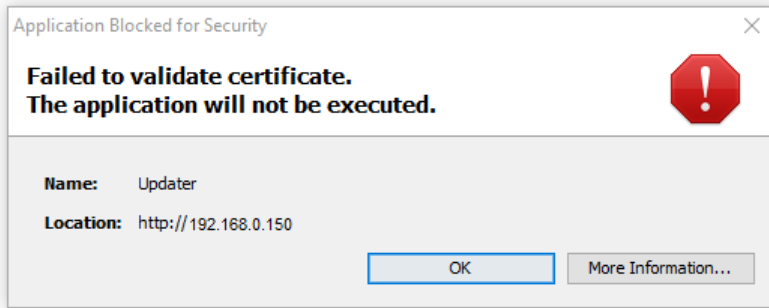
PN04/19 MAY



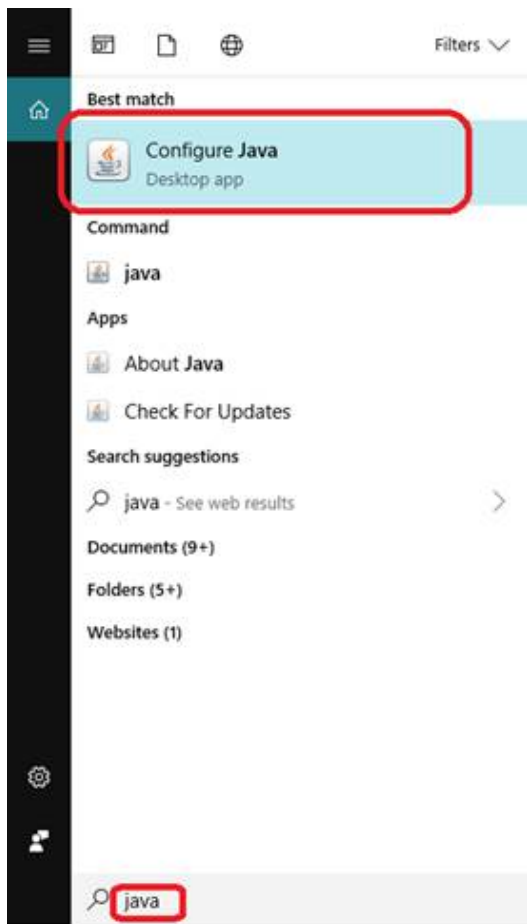
Dear Customer,

we wish to inform you that with some software versions of XWEB (NOT EVO) 300D/500D and 500 series, some alert messages can appear in the browser launching activities that use Java software such as the chart visualization. This document contains useful information to allow you to keep using all XWEB functions.

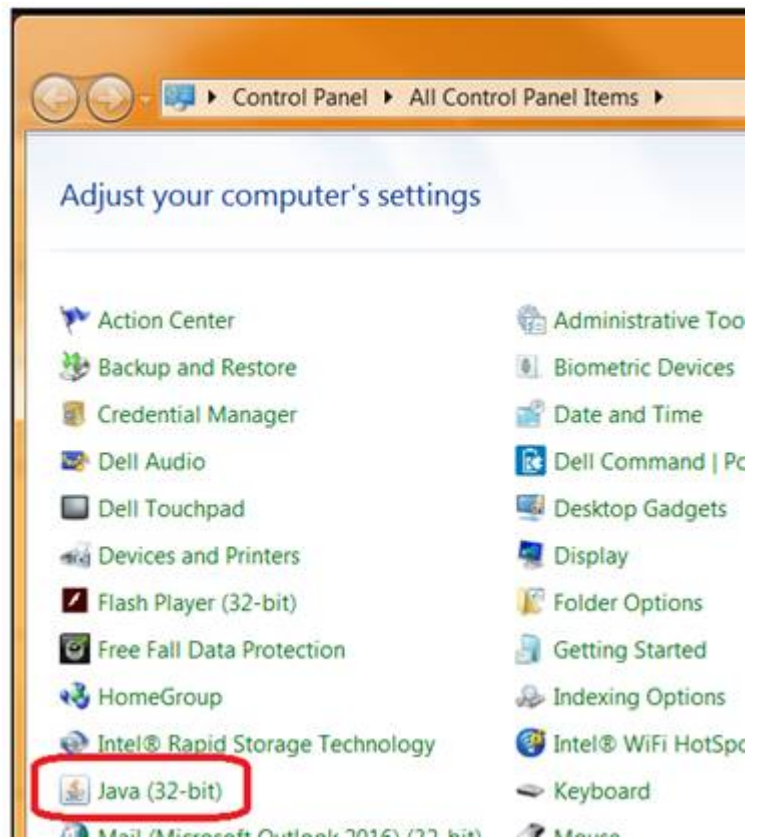
If launching JAVA apps the following message is displayed:



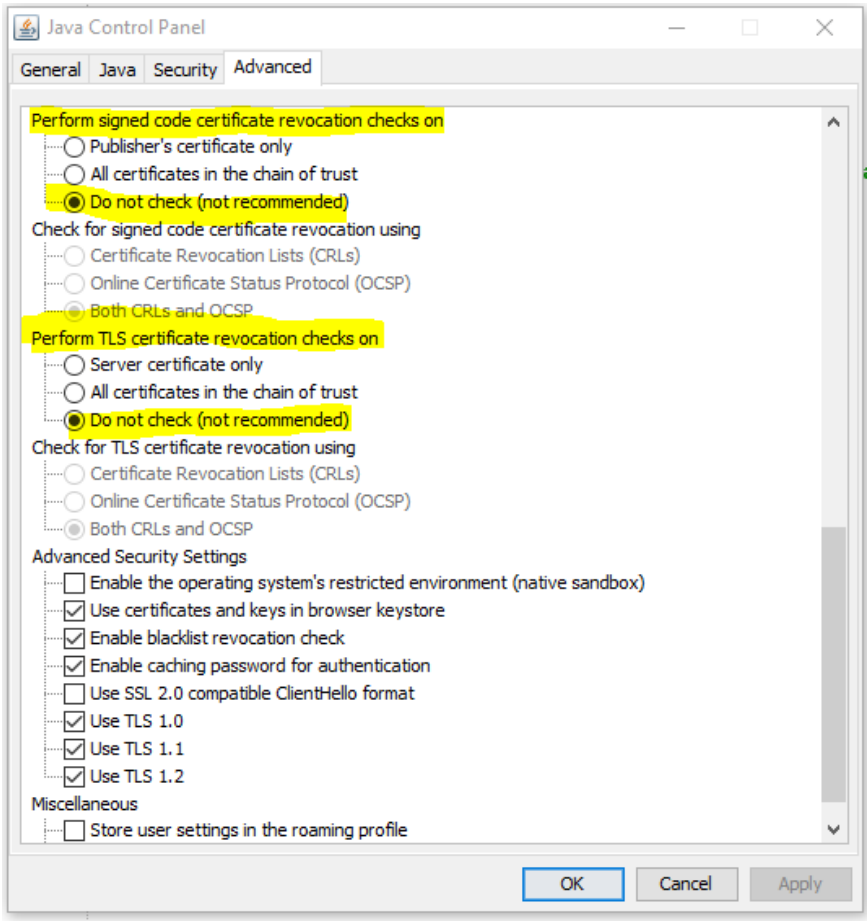
it is necessary to open Java control panel (from Windows control panel or from the search bar)



oppure



then go to the "Advanced" section, scroll down and copy the sections highlighted here in yellow:



press the OK key, close and restart the browser.

For future accesses, please accept the risk to continue.

